
Table of Contents

Cover Page

Table of Contents

A. Incident Briefing/Summary

- Executive Summary
- Incident Command Organizational Chart
- Statewide Objectives
- ESF Specific Objectives

B. Incident Management

- Meeting Schedule
- Organization Assignment List (ICS 203)
 - In SOC
 - In Field
- Communications
 - Staff List/Directory
 - SOC Seating Chart with Phone Number Extensions (ICS 205B)

Incident Briefing/Summary (ICS 201)

- Executive Summary
- Incident Command Organizational Chart
- Statewide Objectives
- ESF Specific Objectives

INCIDENT BRIEFING (ICS 201)**2. Executive Summary:**

The State Operations Center will activate at 3 PM today, Monday, February 10, 2014 in preparation for a potential severe weather event forecasted to arrive in Georgia later this evening.

The Governor issued a State of Emergency Declaration this morning at 9 AM for 14 North Georgia Counties (*Murray, Fannin, Gilmer, Union, Towns, Pickens, Dawson, Lumpkin, White, Cherokee, Forsyth, Hall, Banks and Jackson Counties*). More may be added as the situation dictates. A copy of the Declaration is attached.

The lead representatives from each of the Emergency Support Functions identified in the Georgia Emergency Operations Plan have been notified and are coordinating with their respective support agencies to prepare for this event.

The State objectives for the initial operational period are:

- 1. Appropriately staff the State Operations Center and insure all State resources are prepared to respond prior to and throughout the event to mitigate the effects of the weather on the State infrastructure.*
- 2. Maintain close and continuous coordination with the NWS to monitor the evolving weather situation for potential impact upon the State of Georgia.*
- 3. Execute timely and efficient response to any requests for assistance received by the State Operations Center.*

An incident has been opened in WebEOC named "Weather – 2014 Winter Weather – February 10, 2014". If you have an account please review the incident to remain abreast of the current situation and add comments regarding any actions you take.

3. Statewide Details

Assisting Agencies	GEMA, GSP, DNR, GFA, GEFA, DOT, DPH, DHS, FEMA, Atlanta Red Cross, DOD, State Defense Force, NOAA, GBI, GBI-GISAC
Governors State of Emergency	45 Counties <i>First Group:</i> Murray, Fannin, Gilmer, Union, Towns, Pickens, Dawson, Lumpkin, White, Cherokee, Forsyth, Hall, Banks and Jackson <i>Second Group:</i> Dade, Walker, Catoosa, Whitfield, Chattooga, Gordon, Floyd, Bartow, Polk, Paulding, Cobb, Fulton, Gwinnett, Barrow, Haralson, Carroll, Douglas, DeKalb, Clarke, Oconee, Oglethorpe, Wilkes, Walton, Rabun, Habersham, Stephens, Franklin, Hart, Madison, Elbert and Lincoln
Local State of Emergency	2 Counties Declared (Cherokee/Whitfield)
Fatalities	0
Injuries	0
Shelters Opened/Warming Centers Opened	1 (Standby)
Homes with Major Damages	0
Businesses with Major Damages	0
Customers with Power Outages	Unknown

4. Impacted Area Weather Forecast (*Source: NWS Rep*): Two Events

Summary Event #1: (most uncertainty)

What: Winter Weather Monday Night-Tuesday Noon

Threats: *Snow/Sleet* in the mountains of North/Northeast GA

Sleet Mixed with Rain in advisory area (south)

How Much: *Snow*-1-3" in Mountains/North GA, little or no accumulations in advisory area

Sleet -little or no accumulations in southern advisory area. Elevated surfaces most at risk

Confidence:

Medium: that winter precipitation will occur

Low: Atlanta Metro

Low-Medium on precipitation amounts

Summary Event #2:

What: Winter Weather Tuesday Night-Thursday AM

Threats:

Snow/Sleet in the Mountains of North/Northeast GA

Sleet/Freezing Rain in Winter Storm Watch Area

How Much:

Snow-2-4" in Mountains

.5"-1" I-20 Corridor

Freezing Rain-0.25"+along/just south of I-20. 0.5" possible ATL->eastward

Confidence:

High- that winter precipitation will occur

Medium- Atlanta Metro

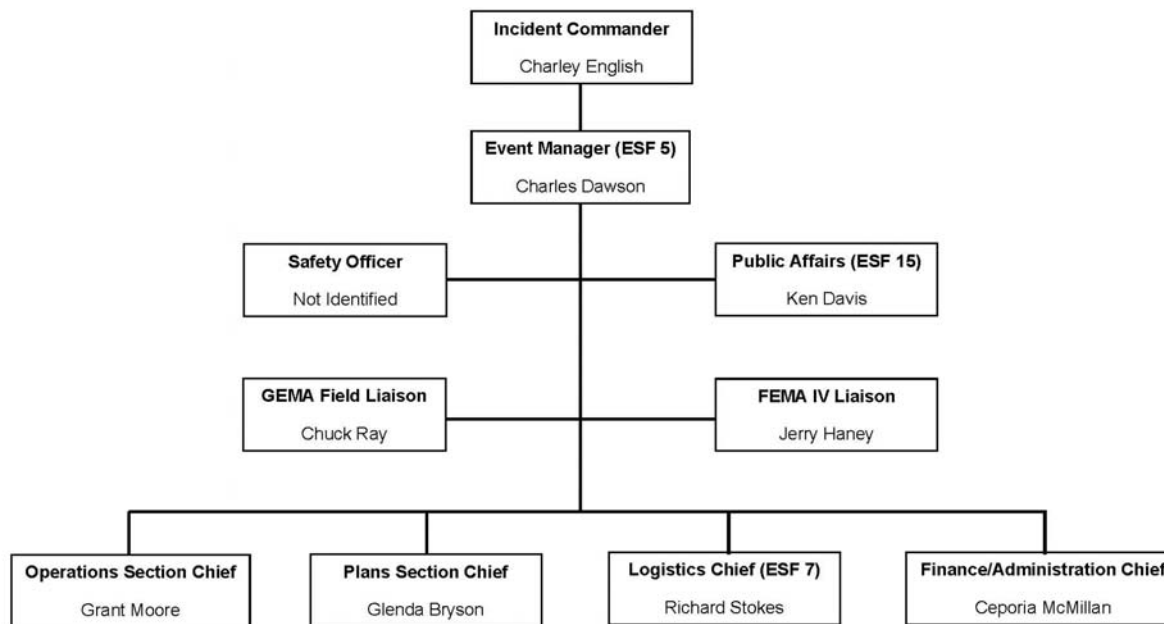
Medium-High on precipitation amounts

5. General Safety Message: First responders and all on-site personnel are advised to be cautious and to take every safety precaution necessary to ensure the safety of themselves, their colleagues and the citizens.

6. SOC Specific Safety Message: *SOC Evacuations*-If SOC evacuation is necessary, please precede to the nearest exit sign. SOC staff should expect to evacuate to the parking lot adjacent to the State Operations Center down to the compound fence on East Confederate Avenue. *SOC Parking*- Parking is available in two locations, in the parking lot on the immediate left when entering the compound and directly adjacent to (behind) the State Operations Center.

INCIDENT BRIEFING (ICS 201)

7. Current Organization Chart (Source: Operations Section Chief)



INCIDENT BRIEFING (ICS 201)**8. Statewide Current and Planned Objectives (ESF 5) (Source: Event Manager)**

1. Appropriately staff the State Operations Center and insure all State resources are prepared to respond prior to and throughout the event to mitigate the effects of the weather on the State infrastructure.
2. Maintain close and continuous coordination with the NWS to monitor the evolving weather situation for potential impact upon the State of Georgia.
3. Execute timely and efficient response to any requests for assistance received by the State Operations Center.

9. Emergency Support Function Specific Objectives (Source: ESF Coordinators)**ESF #1****3 Major Objectives****Status**

- | | |
|---|----------|
| To achieve and maintain "passable" road conditions on two lanes of interstates first, then state routes from the most heavily traveled to the least traveled. Keeping roads safe for emergency vehicles is our first priority | Underway |
| To focus on trouble spots like bridges and overpasses with preventive treating before the snow and ice appear and consistent monitoring during the event | Underway |
| To coordinate with key stakeholders (city and other state agencies) to share information and provide materials, and when appropriate provide updates on road conditions and road closures to the public. | Underway |

ESF #2**3 Major Objectives****Status**

- | | |
|---|----------|
| Receive, respond and track all ESF-2 resource requests for from agencies in affected areas | Underway |
| Track, monitor and respond as needed regarding current 25 GEMA cache Southern LINC radio deployment to GA Nat Guard | Underway |
| Deploy GEMA MCV to backup GEMA State Warning Point to support telecommunications in the event of infrastructure failure | Underway |

Upcoming Operational Period

3 Major Objectives**Status**

- | | |
|---|--|
| Receive, respond and track all ESF-2 resource requests for from agencies in affected areas | |
| Track, monitor and respond as needed regarding current 25 GEMA cache Southern LINC radio deployment to GA Nat Guard | |

Continue to deploy GEMA MCV to backup GEMA State Warning Point to support telecommunications in the event of infrastructure failure

ESF #3

3 Major Objectives

Coordinate with our utilities, Support Agencies and Water and Wastewater Associations in our preparation efforts	Status Fully Accomplished
Activate the GAWARN and request information/inventory of generators from our utilities	Partially Accomplished
Staff the ESF 3 desk at the State Operations Center	Fully Accomplished

3 Major Objectives

Ensure that all utilities has the proper language for Boil Water Notice	Status Underway
Distribute guidance document on how to deal with frozen water pipes	Underway
Respond to incoming resource requests	Underway

ESF #4

3 Major Objectives

5 chainsaw teams on standby	Status Underway
38 - 4wd trucks on standby	Underway
all fire service engines, rescue units, EMS is on 24 hour call	Underway
Upcoming Operational Period	

3 Major Objectives

Continue to support SOC operations throughout event	Status Underway
---	--------------------

ESF #5

- SEE STATEWIDE OBJECTIVES.

ESF #6

List 3 Major Objectives

Continue to support counties in the identification and establishment of warming centers and shelters	Status Underway
Continue to coordinate with transportation partners to provide resources at pre-identified staging areas	Underway
Continue to Staff the State Operations Center and respond to requests as needed	Underway

ESF #7**3 Major Objectives**

Status

Develop a list of state vendors that can provide generators. Determine if Generators are available on a GSA contract.

Underway

Stage cots, MRE's and water for State Staging Areas.

Partially
Accomplished

Determine availability of salt products to support county efforts.

Underway

Upcoming Operational Period

3 Major Objectives

Status

Review Emergency Power Database in WebEOC for affected counties identified by NWS.

Monitor resourcing to State Staging Areas.

Coordinate anticipated Generator efforts with ESF 3

ESF #8**List 3 Major Objectives**

Status

Monitoring Public Health, EMS, and healthcare partners for potential impacts of the coming weather.

Underway

Respond to any request for your support from ESF8 community.

Underway

ESF #11**3 Major Objectives**

Status

Monitoring any unmet needs in the state

Underway

ESF #12**3 Major Objectives**

Status

Monitor power outages, natural gas and other heating fuel curtailments, and availability of motor vehicle fuels

Underway

Monitor storm conditions

Underway

Communicate as needed the status of above to appropriate agencies

Underway

3 Major Objectives

Status

Monitor power outages, natural gas and other heating fuel curtailments, and availability of motor vehicle fuels

Underway

Monitor storm conditions	Underway
Communicate as needed the status of above to appropriate agencies	Underway

ESF #13**3 Major Objectives**

Status

Respond to any L/E needs	Underway
Track incoming requests with WebEOC	Underway
Staff the SOC under ESF13 to coordinate response efforts among partner agencies	Underway

Upcoming Operational Period**3 Major Objectives**

Status

Respond to any L/E needs	Underway
Track incoming requests with WEBEOC	Underway
Staff the SOC under ESF13 to coordinate response efforts among partner agencies	Underway

ESF #15**3 Major Objectives**

Status

Activate State Joint Information Center (SJIC)	Fully Accomplished
Develop joint ESF preparedness message to public and facilitate media access to SOC	Underway
Assign work products to ESF-15/SJIC representatives	Underway

Upcoming Operational Period**3 Major Objectives**

Status

Disseminate joint ESF preparedness message to public
 Coordinate key messages among ESF partners
 Establish SJIC duty roster through Thursday

Department of Defense**Air Operations**

10. Resource Summary: Please see the WebEOC Resource Request Board for specific information regarding specifics. (<https://webeoc1.gema.ga.gov/eoc7/default.aspx>). Requests for Assistance so far have included requests for road salt, blankets, potable water and southern linc telephones.

Incident Management

- Meeting Schedule
- Organization Assignment List
 - In SOC
 - In Field
- Communications
 - SOC Seating Chart with Phone Number Extensions

SOC MEETING SCHEDULE

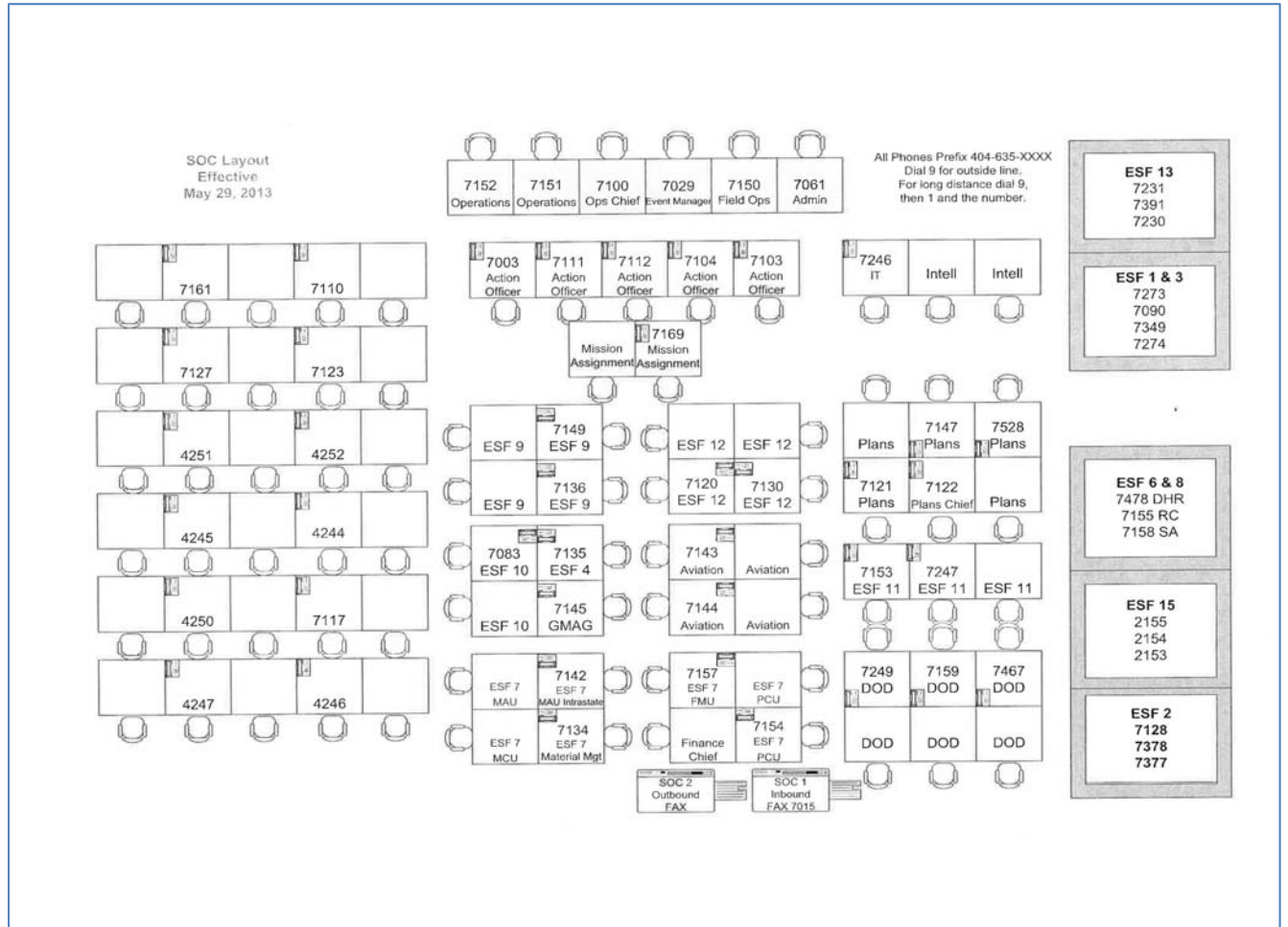
Operational Period #3 Meeting Schedule (Tuesday 2/11 7am-7pm)			
Meeting/ Conference Call	Time	Location	Meeting Participants
Shift Change Briefing	6:30 AM 6:30 PM	SOC	All Hands
Weather Briefing	10:30 AM	ECC	SOC Command Staff ESF Representatives (optional)
County Coordination Call	11:30 AM	ECC	ESF Representatives Command Staff
Weather Briefing	4:30 PM	ECC	SOC Command Staff ESF Representatives (optional)

ORGANIZATION ASSSIGNMENT LIST

POSITION	OPERATIONAL PERIOD			
	Mon 2/10/14 3P-7P	Mon 2/10 7P-7A	Tu 2/11 7A-7P	Tu 2/11 7P-7A
Event Manager	Charles Dawson	Joe McKinney	Charles Dawson	Joe McKinney
Operations Chief	Clint Perkins	Grant Moore	Clint Perkins	Grant Moore
Dep Operations Chief	Lamar McEwen		Lamar McEwen	
LeadAction Officer				
Action Officer 1	Le Doan	Michael Parker	Le Doan	Michael Parker
Action Officer 2	Judy Gourley	Mark Wyland	Judy Gourley	Mark Wyland
Action Officer 3				
Action Officer 4				
Air Operations				
Logistics Chief	Dick Stokes	Jeff Sibley	Dick Stokes	Jeff Sibley
Dep Log Chief				
Material Mgmt				
Facilities Mgmt	Scott Fletcher	Scott Fletcher	Scott Fletcher	Scott Fletcher
Mutual Aid				
Movement Control				
Finance Chief	Ceporia McMillian		Ceporia McMillian	
IT Help Desk	Kenny Rankin	Alex Moon	Kenny Rankin	Alex Moon
Planning Chief	Angela Barton	Lillian Huffman	Angela Barton	Lillian Huffman
Dep Planning Chief		Glenda Bryson		Glenda Bryson
Situation Unit Ldr	Michael Newman	Jen Wade	Michael Newman	Jen Wade
Planner				
Vol & Donated Goods Mgr				
GIS	Leanora Style	Brian Laughlin	Leanora Style	Brian Laughlin
ESF 1	3	3	3	3

ESF 2	Wayne Smith		Wayne Smith	
	Matt Webb		Matt Webb	
	Hal Waters		Hal Waters	
ESF 3	Amy Rammo-Kuhs	Charles Williams	Amy Rammo-Kuhs	Charles Williams
ESF 4	Neal Edmondson			
ESF 5				
ESF 6	Wendy Casey	Wendy Casey	Danny Pitchford	Wendy Casey
	Louis Carrow	Louis Carrow	ARC LNO TBD	ARC LNO TBD
ESF 7				
ESF 8	Kelly Nadeau	Matthew Crumpton	Leah Hoffacker	
ESF 9				
ESF 10				
ESF 11	Venessa S-Green		Jessica Baldour	
			Venessa S-Green	
ESF 12	David Gipson	Kris Anderson	Andrea Schroer	
	Chris White			
ESF 13	Soffie Thigpen	Ryan Newman	Soffie Thigpen	Ryan Newman
ESF 14				
ESF 15				
GaDOD	CW2 Moses	CW2 Moses		
	CPL Brimer	SGT Filbey		
		CPL Burton		
FEMA Liaison	Jerry Haney		Jerry Haney	
USCG				
ARRL				
USACE			2	
CAP				
GEMA Communications Ctr	3	3	3	3

SOC SEATING CHART with Phone Numbers



Comprehensive SITREP

- Detailed Situation Awareness Report



Georgia Emergency Management Agency Situation Report

Incident: Weather - 2014 - Winter Weather - February 10 **Operational Period:** 2/11/14 0700

Executive Summary

Significant Winter Weather threatens to impact many of parts Georgia. The threats include rain, freezing rain, sleet, and snow. The State Operations Center and State Government are fully activated to coordinate the State's response to this winter weather event.

State of emergency declared by Governor Deal affecting the following 45 counties:

First Executive Order: Murray, Fannin, Gilmer, Union, Towns, Pickens, Dawson, Lumpkin, White, Cherokee, Forsyth, Hall, Banks and Jackson.

Second Executive Order: Dade, Walker, Catoosa, Whitfield, Chattooga, Gordon, Floyd, Bartow, Polk, Paulding, Cobb, Fulton, Gwinnett, Barrow, Haralson, Carroll, Douglas, DeKalb, Clarke, Oconee, Oglethorpe, Wilkes, Walton, Rabun, Habersham, Stephens, Franklin, Hart, Madison, Elbert and Lincoln.

Emergency Declarations

Fatalities and Injuries

Impacted Jurisdiction Updates

County	Comments

ESF 1 - TRANSPORTATION

Modes of Travel

Mode	Damages	Inspections	Status	Comments
Air				
Rail				
Water				
Ground	None	Underway	Normal	

Comments

Continue to monitor and inspect road conditions. Road Closures: SR 180 SPUR Both Directions SR 180 icy Conditions Reported. 1 lane (of 1) blocked. Union Co. SR 27 South of Summersville Taylors Ridge Road Ice Both Lanes

ESF 2 - COMMUNICATIONS

No report at this time.

ESF 3 - PUBLIC WORKS & ENGINEERING

No report at this time.

ESF 4 - FIRE

No report at this time.

ESF 5 - EMERGENCY MANAGEMENT

Disaster Recovery Centers

County	Location	Status	Clients(24 Hours)	Clients Total	Comments

Comments

Significant Winter Weather is imminent for many of parts of North and Central Georgia. The threats include rain, freezing rain, sleet, and snow. Major icing is a possibility in the metro Atlanta area and parts east and south. The State Operations Center and State Government are ramped up to coordinate the State's response to this winter weather event. Appropriate State Agencies and federal partners are working in the SOC at Full Activation.

ESF 6 - MASS CARE, HOUSING & HUMAN SERVICES

Sheltering

County	Address	# Last 24 Hours	Cumulative #	Pet Friendly	Special Needs

Comments

The most current shelter information has been posted in WebEOC as of 5:30 a.m. 2/11/2014. This list includes information reported by County EMAs in WebEOC and via e-mail, those supported by the American Red Cross and information reported through coordination between County EMA and ARC Chapter Disaster Program Managers (DPMs). Currently there are 3 Shelters Open with a population of 28 and 17 on Standby. In addition there are 11 Warming Centers identified, not including all Atlanta Fire Rescue Stations.

Red Cross Chapter DPMs and ESF 6 personnel continue to coordinate with potentially impacted counties regarding additional sheltering and resource needs based on the NWS Peachtree City forecast information.

The Salvation Army has committed to providing hot food and drinks to stranded motorist and first responders for the duration of this event. The Salvation Army has eight units on standby at locations listed below and plan to utilize these units along the interstate system or major thoroughfares if requested. Units will remain stationary at their service locations until requested to respond to a specific site by the State Operations Center (ESF 6 or GEMA) or Atlanta-Fulton EMA).

Accessible points of service must be established prior to snow and/or ice accumulation as vehicles are not equipped to drive under these conditions. However, Salvation Army is committed to providing food and hydration if transportation for meals can be arranged.

Salvation Army Garage Locations:
 Atlanta Downtown 468 Marietta St., NW, Atlanta, GA
 Atlanta, Southwest 967 Dewey St., SW, Atlanta, GA
 Marietta, Cobb Co. 202 Waterman St., Marietta, GA
 Griffin 725 Meriwether St., Griffin, GA
 Lawrenceville 3455 Sugarloaf Pkwy., Lawrenceville, GA
 Covington/Newton Co. 5193 Washington St., Covington, GA
 Gainesville, Hall Co. 681 Dorsey St., Gainesville, GA
 Dalton 1109 N. Thornton, Ave., Dalton, GA

ESF 6 Personnel have reached out to the Georgia Baptists to request capability and availability of feeding support should it be needed to support shelter operations. Awaiting reply.

ESF 6 is asking that County EMA and ARC provide shelter population counts by 6 a.m. and 6 p.m. each day to ensure accurate reporting and coordination of support.

ESF 6 personnel will continue to provide staffing at the SOC until no longer necessary.

WCCasey
 State Mass Care Coordinator

ESF 7 - LOGISTICS MANAGEMENT & RESOURCE SUPPORT

Points of Dispensing (PODs) In Operation

County	Number	Remarks
--------	--------	---------

Commodity Status By Truckload

Action	Water	Meals	Ice	Other
Delivered to PODs Today	0	0	0	0
Current LSA Inventory	0	0	0	0
On Order FEMA	0	0	0	0
On Order Vendor	0	0	0	0

Logistical ARKs Passed to FEMA

Commodity-Items	Tracking #	Remarks
-----------------	------------	---------

Contracts Awarded This Period

Item	Cost	QTY	Comments
------	------	-----	----------

Base Camp Operations

Location	Max Cap	Current	Remarks
----------	---------	---------	---------

Staging Area Operations

Location	Comments
----------	----------

EMAC Mutual Aid Requests

Mission	Number	Status
---------	--------	--------

Comments

All objectives are progressing and there are no known obstacles at this time.

ESF 8 - PUBLIC HEALTH & MEDICAL SERVICES

No report at this time.

ESF 9 - SEARCH & RESCUE

No report at this time.

ESF 10 - Hazardous Materials

No report at this time.

ESF 11 - AGRICULTURE

No report at this time.

ESF 12 - ENERGY

Electrical Power Outages

County	EMC Outages	MEAG Outages	GA Power Outages	Total
--------	-------------	--------------	------------------	-------

Natural Gas Outages

County	# of Customers Affected	Estimated time until service is restored
--------	-------------------------	--

Comments

ESF 12 has two representatives on the second shift, from 7 PM Monday night through 7 AM Tuesday morning. Ted Gillard from Georgia Power and Kris Anderson from GEFA. Tim Harben, Greg McKoy, and Paul Eckstein from Georgia Transmission will be arriving at 5 AM Tuesday.

There are no impacts to ESF 12 at this time. No power outages caused by the weather and no fuel issues reported. Georgia Power has requested out of state assistance for this event.

ESF 13 - PUBLIC SAFETY & SECURITY

Law Enforcement Missions

County	Mission	# LE Officers Involved	Status	Comments
	Have Any Correctional Facilities Been Affected? (If yes, explain in Comments)			No
	Are There Any Major Traffic Problems to Report? (If yes, explain in Comments)			No
	Are There Any Instances of Major Civil Disobedience to Report? (If yes, explain in Comments)			No

Comments

Response to any Law Enforcement needs to support local and state agencies. Be available to escort emergency responders as needed on state roadways. Assist local L/E with security, road blockage, detours, or other response operations as needed. Provide security and support for other response operations as needed among state partners and in local jurisdictions (sheltering, critical transportation, etc.)

We called around this morning to the North Ga areas, checking road and weather conditions. No substantial road concerns at this time 2-11-14 0515 hours.

ESF 14 - LONG TERM RECOVERY

No report at this time.

ESF 15 - EXTERNAL AFFAIRS

Joint Information Center

Status/Address: - 935 E Confederate Ave SE, Atlanta, GA 30316 / 404-635-7000

Key Points DNR DOAS DOT DPS GaDOD GEFA GEMA Regents EPD GBI FEMA

Inquiries Fielded

Office	Quantity	Key Points
2	0	activation, agencies leaning forward

Media Briefings

Location	Status	Comments
SJIC Phone	Pending	Druck 8:40 2/11
SJIC Phone	Pending	Al Jazeera 11 2/11
SJIC Phone	Completed	CBS Radio
Phone - SJIC	Completed	Al Jazeera 11
phone	Completed	Weather Channel 430
SOC	Completed	NPR
SOC	Completed	AJC
SOC	Completed	WSB-TV Ch 2
SOC	Completed	FOX 5
SOC	Completed	WABE 90.1 PBA
SOC	Completed	11 Alive

Comments

Key Messages:

State of emergency for 45 counties

State agencies are pre-staging equipment and personnel in preparation for this upcoming winter weather.

GEMA encourages Georgians to plan, prepare, and stay informed for updates on current and developing weather conditions. For preparedness information, go to www.gema.ga.gov

GA DEPARTMENT OF DEFENSE

Mission Summary

Open	Closed	Cancelled	Total
0	0	0	0

	Soldier / Airmen on Duty			
	Army	Air	SDF	Total
Immediate Response	0	0		0
State Active Duty	0	0		0
Title 32	0	0		0
Title 10	0	0		0
Total	0	0	0	0

Comments

ADDITIONAL REPORT INFORMATION

State Agencies / Organizations Responding

School Closings Include:

Atlanta Public Schools
Banks County Schools
Barrow County Schools
Bartow County Schools
Bremen City Schools
Calhoun City Schools
Carroll County Schools
Carrollton City Schools
Cartersville City School
Cherokee Charter Academy
Cherokee County Schools
Clarke County Schools
Clayton County Schools
Cobb County Schools
Commerce City Schools
Coweta Charter School
Dalton Public Schools
Dawson County Schools
Decatur City Schools
DeKalb County Schools
Douglas County Schools
Floyd County Schools
Forsyth County Schools
Franklin County Schools
Fulton County Schools
Gainesville City Schools
Gilmer County Schools
Gordon County Schools
Gwinnett County Schools
Habersham County Schools
Hall County Schools
Hapeville Charter Career Academy
Hart County Schools
Jackson County Schools
Jefferson City Schools
KIPP Metro Atlanta Schools
Lumpkin County Schools
Madison County Schools
Marietta City Schools
Murray County Schools
Oconee County Schools
Oglethorpe County Schools
Paulding County Schools
Pickens County Schools
Polk County Schools
Rockdale County Schools
Rome City Schools
Stephens County Schools
Towns County Schools
Walton County Schools
White County Schools

Distribution

Publication Time for the Next Situation Report

02/12/2014 07:00:00

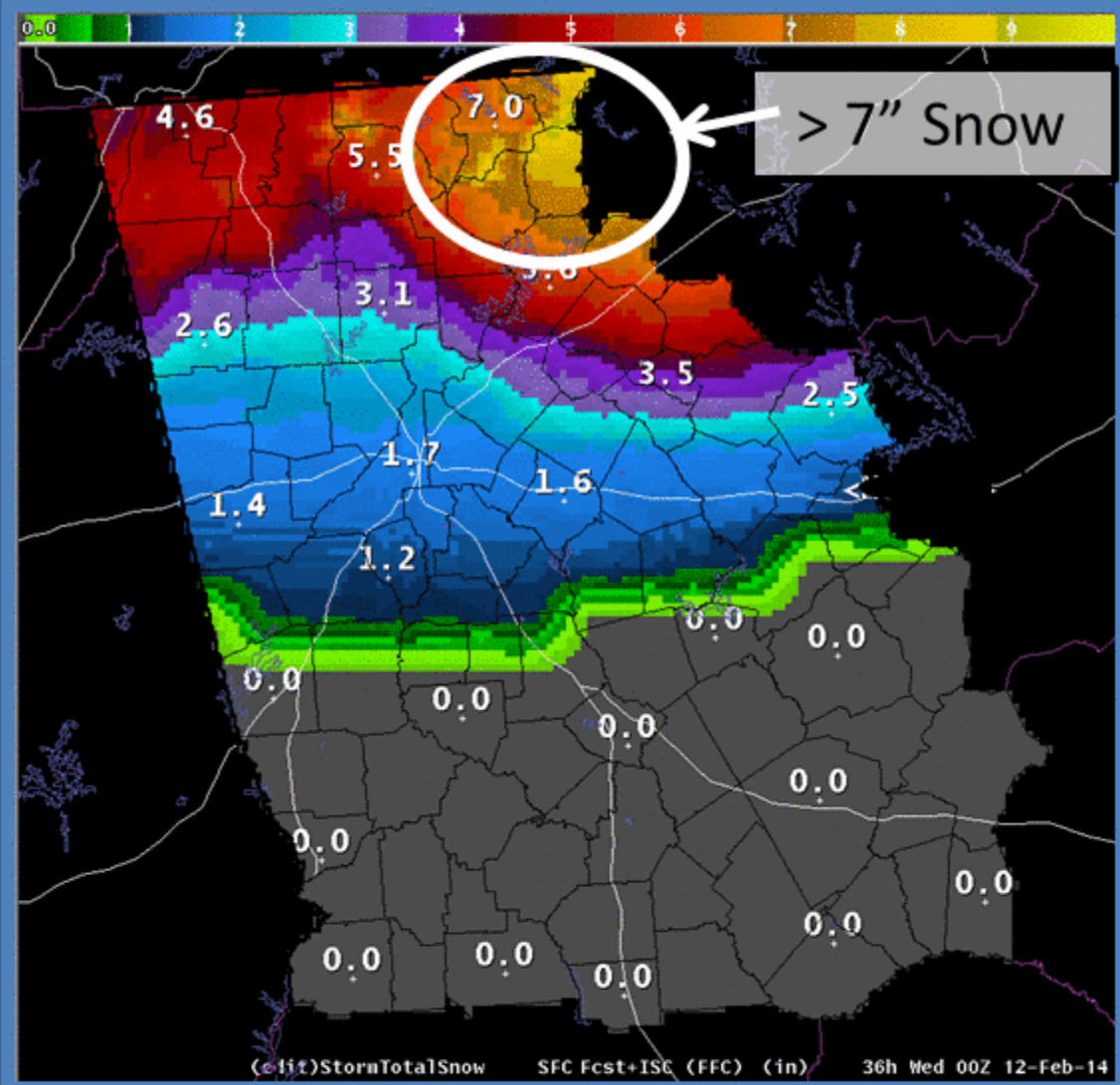


Significant Winter Storm Expected Tuesday Night Through Thursday

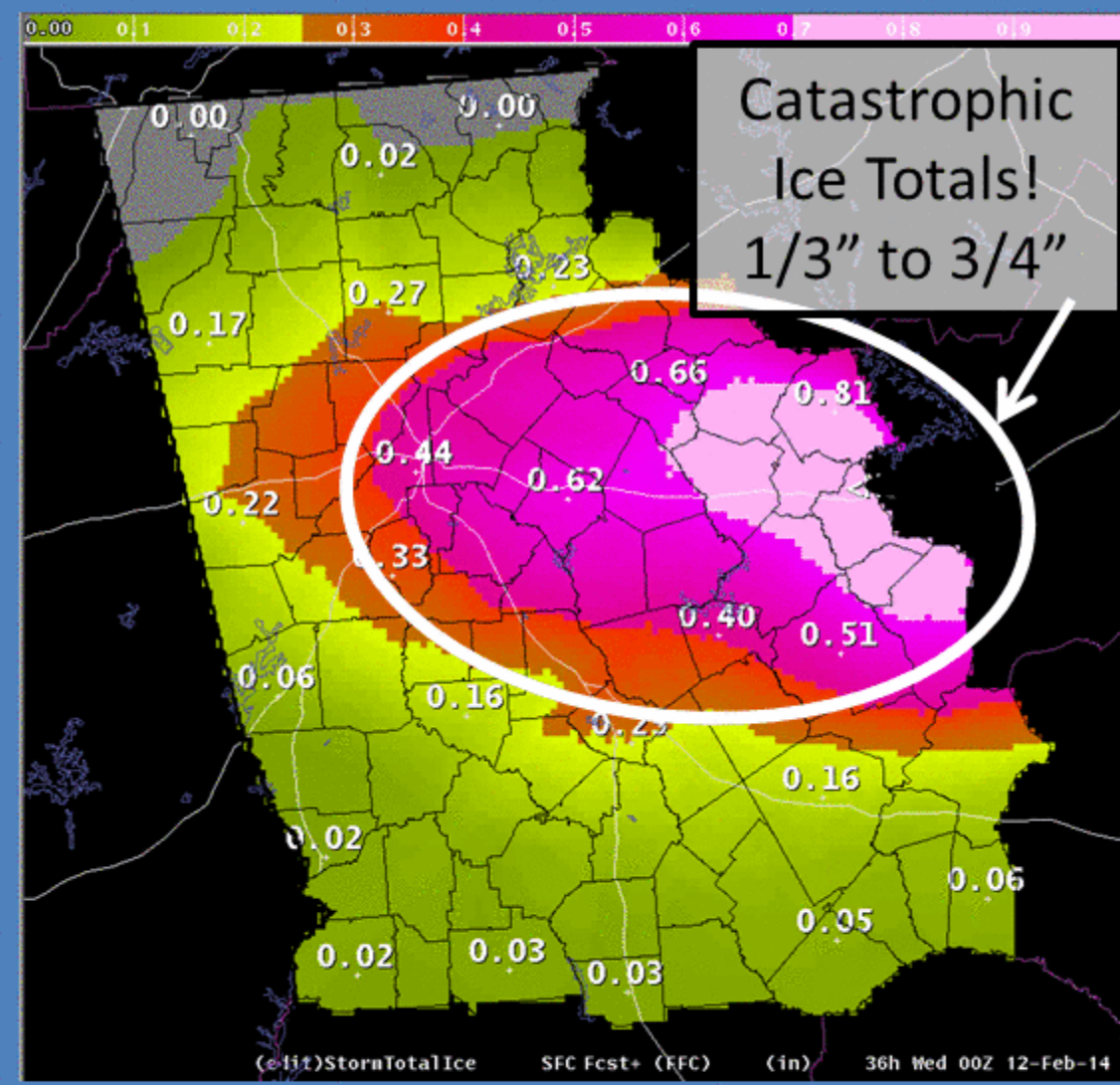


Stay alert to changing hazards as we update the forecasts.

SNOWFALL AMOUNTS Tuesday Night-Thursday



ICE AMOUNTS Tuesday Night-Thursday



- Confidence is increasing in an event of *historical proportions*
- Expect *significant* snowfall totals across north and especially northeast Georgia
- Expect significant – *crippling* – ice totals from Atlanta eastward along the I-20 corridor

Do not wait to begin making plans for this significant winter event!!