



Cutter-Hammer
F.T-R

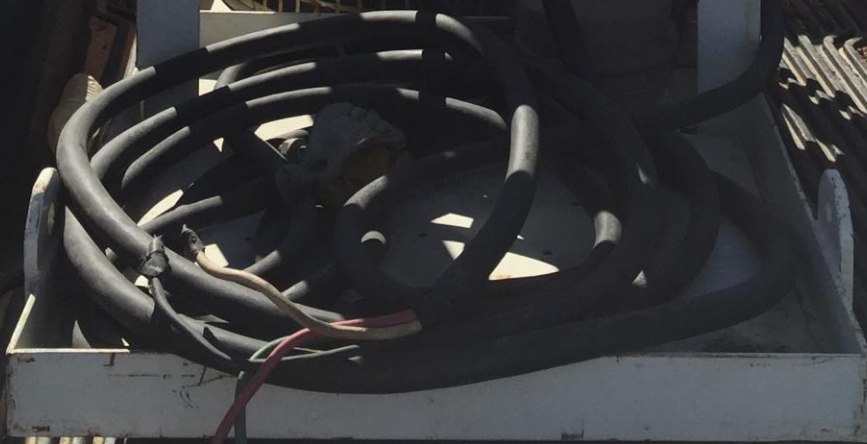
DANGER
HIGH VOLTAGE

GORMAN-RUPP

1718

WARNING
DO NOT OPERATE THIS EQUIPMENT UNLESS YOU ARE A TRAINED OPERATOR.
DO NOT OPERATE THIS EQUIPMENT IF YOU ARE UNDER THE INFLUENCE OF ALCOHOL OR DRUGS.
DO NOT OPERATE THIS EQUIPMENT IF YOU ARE FATIGUED OR TIREDE.
DO NOT OPERATE THIS EQUIPMENT IF YOU ARE NOT PROPERLY TRAINED.
DO NOT OPERATE THIS EQUIPMENT IF YOU ARE NOT WEARING YOUR SAFETY BELT.
DO NOT OPERATE THIS EQUIPMENT IF YOU ARE NOT WEARING YOUR SAFETY GLASSES.
DO NOT OPERATE THIS EQUIPMENT IF YOU ARE NOT WEARING YOUR SAFETY SHOES.
DO NOT OPERATE THIS EQUIPMENT IF YOU ARE NOT WEARING YOUR SAFETY HELMET.
DO NOT OPERATE THIS EQUIPMENT IF YOU ARE NOT WEARING YOUR SAFETY VEST.
DO NOT OPERATE THIS EQUIPMENT IF YOU ARE NOT WEARING YOUR SAFETY GLOVES.
DO NOT OPERATE THIS EQUIPMENT IF YOU ARE NOT WEARING YOUR SAFETY HAT.
DO NOT OPERATE THIS EQUIPMENT IF YOU ARE NOT WEARING YOUR SAFETY GOGGLES.
DO NOT OPERATE THIS EQUIPMENT IF YOU ARE NOT WEARING YOUR SAFETY MASK.
DO NOT OPERATE THIS EQUIPMENT IF YOU ARE NOT WEARING YOUR SAFETY Goggles.
DO NOT OPERATE THIS EQUIPMENT IF YOU ARE NOT WEARING YOUR SAFETY Goggles.
DO NOT OPERATE THIS EQUIPMENT IF YOU ARE NOT WEARING YOUR SAFETY Goggles.
DO NOT OPERATE THIS EQUIPMENT IF YOU ARE NOT WEARING YOUR SAFETY Goggles.

READ INSTRUCTIONS
CAUTION



2613-CY



SUBMERSIBLE dewatering PUMP

THE GORMAN-RUPP COMPANY
MANSFIELD, OHIO, U.S.A.
ST. THOMAS, ONTARIO CANADA
© THE GORMAN-RUPP CO. 1985

MARCA REGISTRADA
Patents applied for

MODEL NO.

FACTORY WIRED

S6A1

460V 3P

SERIAL NO.

960137

HP

60

KW

PHASE

3

HERTZ

60

VOLTS

460

AMPS

65

CAUTION — Ground unit at control before starting.
CHECK rotation. Apply power. If whole unit reacts counter clockwise, rotation is correct.
CHECK oil level in motor periodically. Avoid entrance of dirt or water to motor. Use only Gorman-Rupp submersible pump oil or factory approved alternate.
MAINTAIN oil level in seal chamber. If contaminated with water, oil may appear milky. If more than 50% water after settling, seal should be inspected — use same oil as for motor.

IMPORTANT — when ordering parts provide pump serial and model number.

10038
IMPELLER ROTATION
PUMP KICKS OPPOSITE DIRECTION

GOR
GORMAN PUMP





BAUER

LE 511 EP WJ-TRONIC 0010 P-123 134111

MSHA

078 1112 0010



480V60HZ 440V50HZ
C-H 1889-3

CUTLER HAMMER

 **CONTROL**®

PARTS PUB C10E-2
CONTACT KIT 6-35-2

MADE IN U.S.A.

LINE

Westinghouse
Series C
Motor Circuit
Protector

C Type HM

100 AMPS 3 PO
600VAC-250VDC
CAT HMCP100P
STYLE 6630C87E
60/75°C WIRE-CU
60/75°C WIRE-CU

Instantaneous Trip Setting

To Set:
Press & Rotate

A B
H C
G D
F E

100

LOAD

ON

OFF